



WaterLink® **SpinTouch BC**

The Ultimate  
Automated Water  
Analyzer



 **LaMotte**

For Testing **Boiling & Cooling Water**  
**11 Tests in 60 Seconds!** Ready to go anywhere!

# WaterLink® SpinTouch® BC

“Every now and then a technology emerges that changes people’s lives. For people who test water, that time is now.”

## Available Tests

See back page for details

Total Alkalinity

Bromine

Free Chlorine

Total Chlorine

Combined Chlorine

Copper

Calcium Hardness

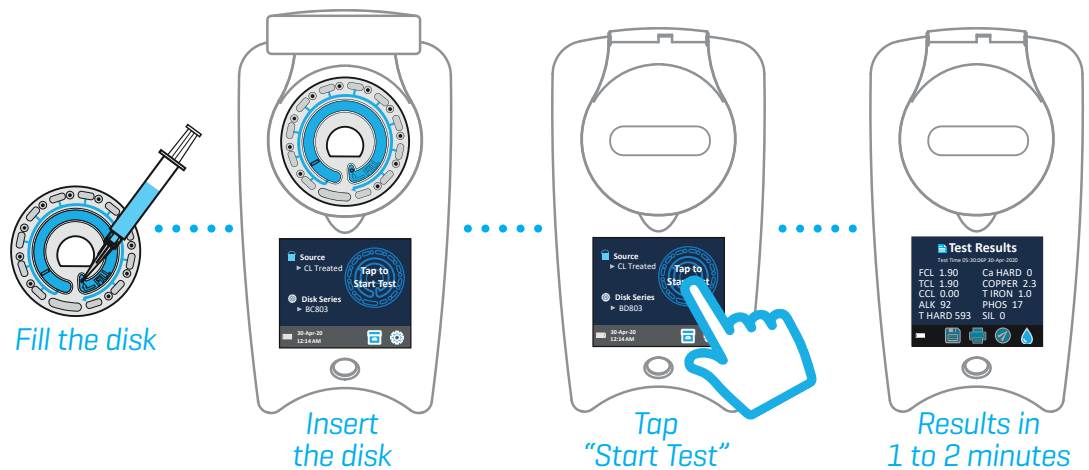
Total Hardness

Total Iron

Phosphate

Silica/Silicon Dioxide

The innovative **WaterLink® Spin Touch® BC** photometer does all your boiling and cooling water testing for you. Each sealed reagent disk contains the precise amount of reagent needed to run a complete series of tests. Just fill one unique Spin reagent disk with less than 3 mL of water and all your vital tests are done automatically—in just 1 minute! It’s the most advanced system for precise use of wet chemistry methods ever produced. Now analysts can achieve precision without time consuming test and clean-up procedures. This ground-breaking analysis system is so simple anyone can use it! No vials to fill, no prep time, no guessing!



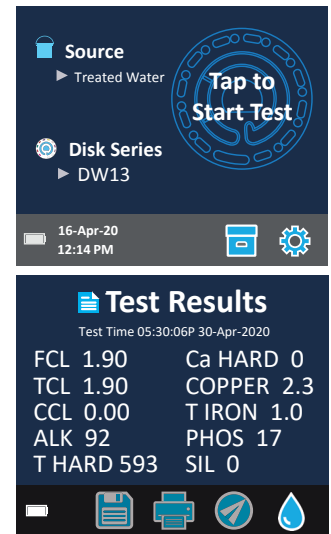
So Simple! So Fast! So Precise!

“Proven analytical chemistry has combined with **Centrifugal Fluidics Photometry** to create the breakthrough **WaterLink® Spin Touch®**”



**Centrifugal Fluidics Photometry™**

# The Device *Precise analysis of 11 parameters in 60 seconds!*



## Reliable Results

- Virtually Eliminates User-Error
- Pre-Measured Reagents
- Exact Reaction Times and Auto-Blanking
- Meter Calibration Check System
- 6-Wavelength Photometer

## Super Fast & Simple

- Fill Disk and Insert > Select "Start Test" > Read Results

## Data Logging

- Stores Test Dates, Times, Results, Location

## Stand-Alone

- No Computer, Smartphone, or Tablet Needed
- Touchscreen Operation
- Communicate through Bluetooth® or USB

## Rugged and Portable

- Innovative Water-Resistant Housing
- Internal, Rechargeable Batteries

Bluetooth® is a registered trademark of Bluetooth® SIG, Inc.

Instrument Type:	Centrifugal Fluidics Photometer
6 Wavelengths:	390 nm, 428 nm, 470 nm, 525 nm, 568 nm, 635 nm
Display:	Color Capacitive Touchscreen, 3.5", 320 X 240 pixel resolution
Languages	English, French, Spanish, German, Italian, Portuguese, Dutch, Swedish
Batteries:	Lithium Ion, Rechargeable (Full Charge in 10 hours), 150 tests per charge
Communication:	Bluetooth, USB-C
Calibration:	Factory Set, Field Calibration via Internet Connection
Data Storage:	Last 250 Test Results with Date and Time
Water Resistance:	Rubber Co-molded Base, Rubber USB Port Plug, Gasketed Display & Hinge
Size & Weight:	8.5 L x 4.9 W x 4.1 H inches; 1.74 lb; 22.6 L x 12.7 W x 11.4 H cm; 0.79 kg
Operation:	Single On/Off/Reset Button with Indicator Light, Touchscreen
Firmware:	Internet Updateable (New Tests, New Test Calibrations, etc.)
Printer:	Optional Bluetooth® Printer (Code 5-0066); 384 dots per line at 8 dots/mm resolution
Certification	CE

**NOTICE! Colored or turbid water samples:** The WaterLink Spin Touch uses the blank sample well in the disk to ratiometrically correct for normal levels of color and turbidity in clean samples. Scatter will increase in samples with elevated amounts of color or turbidity and the test results will not be accurate. The WaterLink Spin Touch is not recommended for analyzing samples that have medium to high color or medium to high levels of turbidity.

# The Complete Lab

## WaterLink® Spin Touch® BC Code 3586

Includes: Photometer, Instruction Manual, Quick-Start Instructions, 3 Syringes, Meter Check Disk, Disk Cover, Sample Bottle, USB Cable with AC Adapter, Carrying Case (Disks sold separately)



# The Reagent Disks for Boiling & Cooling Water

Our disks are manufactured right in our plant, assuring the highest quality control standards.

Disk Series BC803  
Code 4339-H

Disks come individually packaged in foil pouches in boxed packs of 50.

Test Parameter	Range
Free Chlorine (DPD)	0-15 ppm
Total Chlorine (DPD)	0-15 ppm
Bromine (DPD)	0-33 ppm
Combined Chlorine	0-15 ppm
Calcium Hardness	0-800 ppm
Total Hardness	0-1200 ppm
Total Alkalinity	0-250 ppm
Copper	0-3.0 ppm
Iron, Total	0-6 ppm
Phosphate	0-50 ppm
Silica/Silicon Dioxide	0-100 ppm

Disk Patent No. 8,734,734, FCI Patent No. 8,987,000  
TCI Patent No. 8,993,337,  
FCI EU Patent No. EP2784503 A1



RECYCLE YOUR DISKS! Ship us your used disks—we'll grind and recycle them. For details, go to [www.waterlinkspintouch.com/support](http://www.waterlinkspintouch.com/support)

## The Optional Software

### WaterLink Solutions™ PRO

This versatile and robust cloud-based water analysis solution stores all your records, boasts customizable treatment profiles and reports, and can be accessed from an internet connected computer or supported mobile device via the app. Create a free account at [softwarecenter.lamotte.com](http://softwarecenter.lamotte.com).

### WaterLink® CONNECT2

Control and collect results from your meter to store locally on your computer. Every test result is retained by date/time and can even be noted as to the location from which the result was taken. Download it for free at [softwarecenter.lamotte.com](http://softwarecenter.lamotte.com)



802 Washington Avenue | Chestertown, Maryland 21620 USA  
Tel: 800-344-3100 or 410-778-3100  
Email: [info@lamotte.com](mailto:info@lamotte.com) | [waterlinkspintouch.com](http://waterlinkspintouch.com) | [lamotte.com](http://lamotte.com)